



ag-kote[™]

ANTI-GASSING / LOW BAKE
Powder Coatings

SANDTEX

Fine Textures



SANDTEX

Fine Textures



DX632Y8012
RAL 1023



DX632R8015
RAL 3000



DX631R8014
RAL 3004



DX632B8026
RAL 5002



DX632B8025
RAL 5010



DX631B8024
RAL 5011



DX631G8033
RAL 6005



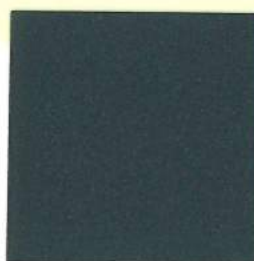
DX631G8034
RAL 6009



DX631A8049
RAL 7016



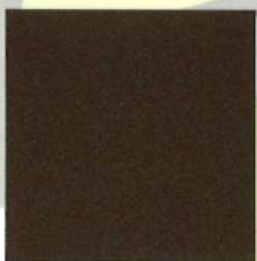
DX631A8050
RAL 7021



DX631A8053
RAL 7024



DX632A8047
RAL 7035



DX631M8014
RAL 8017



DX631M8013
RAL 8019



DX632W8016
RAL 9003



Note: Due to the effects of heat, light and time on these chips, we can not guarantee that the colour and gloss of our powders will match the chips exactly.



DX631N8004
RAL 9005



DX632W8017
RAL 9010



DX632W8018
RAL 9016

SANDTEX METALLICS*

*Please note that all of the products below starting with the letters DX, as well as almost any other RAL color, can also be manufactured in a "sandtex metallic" version. The five swatches below are simply examples of that process. These are all considered custom or made to order powders.



DX631BS8000
RAL 5011



DX631AS8024
RAL 7021



DX631MS8001
RAL 8017



DX632AS8019
RAL 9006



DX632AS8020
RAL 9007



Innotek OXYPLAST THERMOCLAD

www.protechpowder.com

AG-KOTE™ is the Protech/Oxyplast Group's line of anti-gassing powders. Because of our unique formulations and the low temperatures needed to cure these powders, porous substrates can now be coated with almost no craters, pin holes, or air bubbles. As well, the low temperatures provide energy and cost savings. **AG-KOTE™** powders are formulated to show excellent chemical and stain resistance as well outstanding exterior durability. And, like all Protech products, they are environmentally friendly.

ADVANTAGES

- Anti-gassing properties
- Low temperature
- Excellent chemical, stain and scratch resistance
- Superb spraying properties
- Outstanding corrosion resistance and UV protection
- Environmentally friendly
- Available in a wide range of colors
- Cost and energy savings due to decrease in oven temperatures
- Ideal for galvanized steel, cast iron and aluminum.
- Also available in a metallic finish

